



User manual

Dehumidifier Carl

Art. 2506



Thank you for choosing this product.
Please read this instruction manual before using it.



Read the user manual before use, refer to the corresponding section of these user instructions.



Recycle unwanted materials instead of disposing of them. All appliances and packages must be sorted and delivered to a regional recycling centre and processed in an environmentally friendly manner.



The product complies with the applicable EU directives and other provisions.



R290 Refrigerant

This device uses a flammable refrigerant. If refrigerant leaks and comes into contact with a fire or heating element, it creates harmful gas and there is a risk of fire.

Table of contents

1. Safety instructions	84
2. Parts list	86
3. Before operation	88
4. Continuous Drainage	88
5. Operation Instructions	89
6. Cleaning	95
7. Storage	96
8. Display Error Codes	96
9. Troubleshooting	97
10. Technical specifications	98
11. Smart Connection Operation Guide	98
12. Service	102
13. Warranty	102

1. Safety instructions

Warning

This appliance is intended for indoor use only in private homes. Any other use is not recommended by the manufacturer and may cause fire, electric shock, or other personal injury or damage.



Warnings

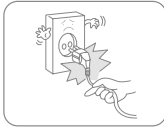


Wet hands are not allowed

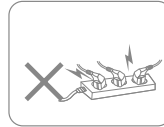


Warning

Power cord



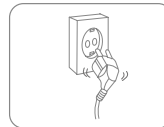
Do not try to unplug the power cord from the wall socket.



Do not connect the appliance to an overloaded extension lead.



Do not place heavy objects on the power cord in order to avoid safety risks.



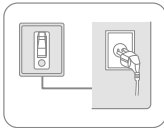
Do not use the appliance if the power cord cannot be securely fastened in the plug socket.



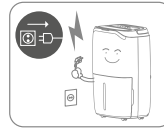
Do not attempt to replace the power cord, contact the authorised service workshop for repair.



Do not touch the plug with wet hands in order to avoid electric shock.



The socket must be grounded and properly secured.



Unplug it during lightning storms.

Location



Do not place flammable and explosive objects around the appliance in order to avoid fire.



Place the appliance on a stable, flat surface.



Do not use the appliance in locations with a draught.



Do not use the appliance in swimming pool or similar facilities in order to avoid safety hazard.

During use



Turn off the power and unplug the power cord before moving the device.



Do not pour water into the appliance in order to avoid malfunction.



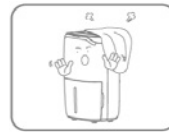
Children should be supervised to ensure that they do not play with the appliance.



Do not place heavy objects on the appliance in order to avoid malfunction.



The apparatus must not be knocked over or subjected to impact or shock in order to avoid malfunction.



The appliance must not be covered when in use.

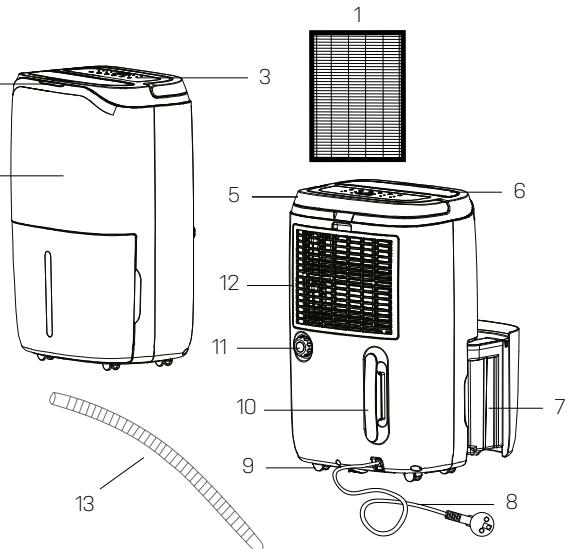


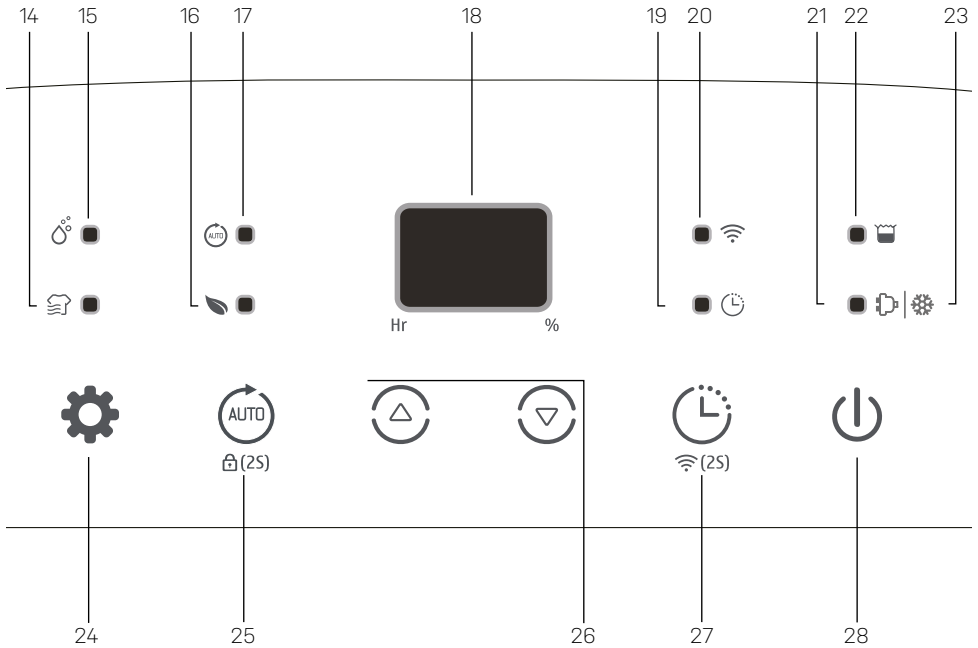
Do not place your hands on the air outlet in order to avoid damage or malfunction.

2. Parts list

Components

1. Installed HEPA filter
2. Tri-color Humidity Light
3. Control Panel
4. Front Cover
5. Handle
6. Air Outlet
7. Water Tank
8. Power Cord
9. Castors
10. Power Cord Bracket
11. Drainage Outlet
12. Air Inlet Gril
13. Drainage Pipe





Control Panel

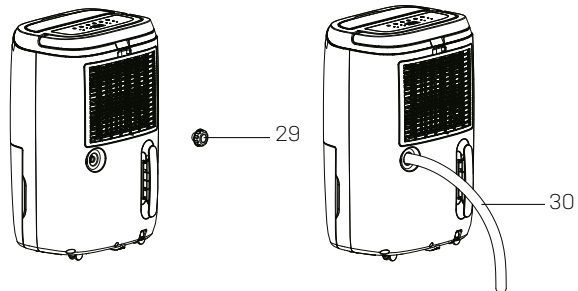
- 14. Laundry Drying Indicator
- 15. Manual Dehumidifying Indicator
- 16. Air Purifying Indicator

- 17. Auto dehumidifying Indicator
- 18. Humidity Level
- 19. Timer Button
- 20. WiFi Indicator
- 21. Work Indicator
- 22. Full Tank Indicator

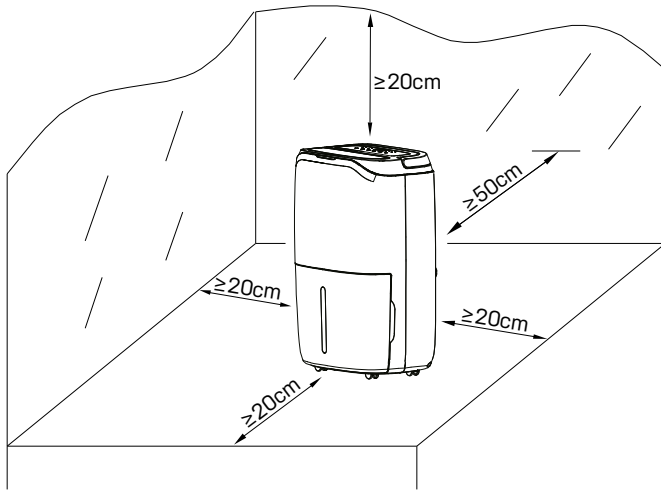
- 23. Defrost Indicator
- 24. On/Off Button
- 25. Auto Button/Child Lock Button
- 26. Up and Down Button
- 27. Timer Button
- 28. Mode Button

Drainage

- 29. Drainage Outlet Plug
- 30. Drainage Pipe



3. Before operation



- Place the dehumidifier in an upright position on a stable, flat surface.
- Ensure the dehumidifier is at a safe distance at least 50 cm away from a wall or furniture.
- Supply power should be in correspondence with the value on the nameplate, power outlet needs to be grounded.
- Ensure the tank is correctly fitted, if the tank is full or not in place, the tank full light comes on and the dehumidifier will stop working.

4. Continuous Drainage

In general, water will be collected by tank, if you want continuous drainage, please do steps as follows (refer to section 2 "Part List")

- Insert the drainage pipe with 19mm inner diameter through the drainage outlet.
- Put the water tank back in place.



Please always make sure the pipe is going downhill, and is not blocked or kinked.

5. Operation Instructions



Desired setting will be confirmed 3s after the operation.

Tri-color light will reflect the environment humidity:

Red light: RH% ≥ 65% // Green light: 55% ≤ RH% ≤ 65% // Yellow light: RH% < 55%.

Switch On / Switch Off The Unit [Power button]

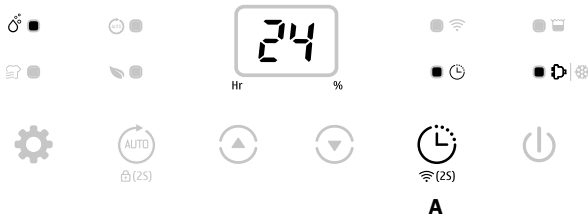


Connect to the power supply and press the power button (A) once to turn on the unit. By default the unit runs on manual continuous dehumidifying (B) with low fan speed. The working indicator will be on (C).



Press the power button to turn off the unit, it will stop working, fan will work for some seconds to blow out the hot air inside the unit.

Auto Shut-off Timer Function [Timer button]



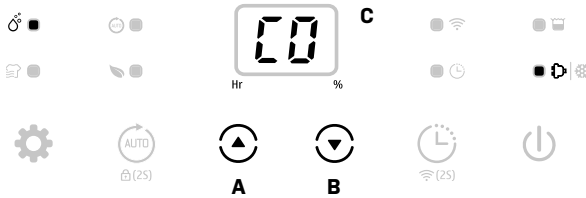
Press the timer button (A) to select your preferred timer hour from 00-24-00 for automatic shut off setting by each press.



Auto timer off setting will be cancelled if the timer button is pressed 2 times in 5 seconds.

Auto timer off setting will be cancelled if the unit is switched off and switch on again.

Humidity Setting [Up and Down buttons]

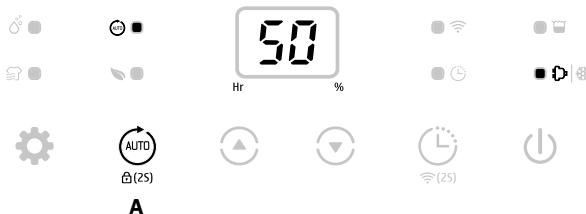


Press the humidity setting buttons (A or B) to select your preferred humidity from CO-30%-35%-40%-45%-50%-55%-60%-65%-70%-75%-80%-CO. CO means continuous dehumidifying regardless of ambient humidity.



The display C shows actual humidity in the room. Pressing A or B shows what the unit is set to dehumidify.

Auto Dehumidifying Function [Auto button]



Press the auto button (A) to select the Auto Dehumidifying mode, the unit runs automatically accordance to the ambient humidity detected below:

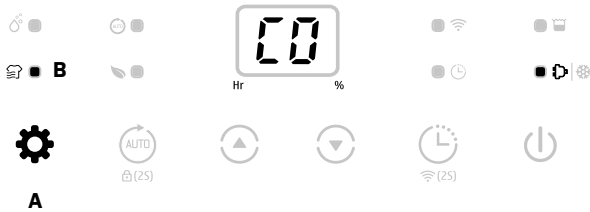
Ambient RH% detected	Compressor	Fan Speed Level
RH% > 60%	Working	High
40% ≤ RH% ≤ 60%	Working	Low
RH% < 40%	Stops working	Low



Up/Down buttons cannot be used with auto dehumidifying function

Multifunction [Mode button]

Laundry Drying Mode

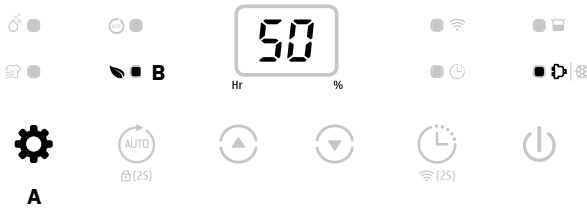


Press the mode button (A) to select Laundry Drying mode (B), the unit runs in continuous dehumidification with high fan speed for 6 hours and then switches off automatically.



The Timer will not work together with the laundry mode.

Air Purifying Mode



Press the mode button (A) to select Air Purifying mode (B), the unit runs with fan speed without dehumidifying.



The light on the unit will be on, even if the unit is in air purifying mode. The light reflects the environment humidity. Thus, help you decide if you need to change to dehumidifying mode or if you need to humidify.

Light modes:

Red light: $RH\% \geq 65\%$ // Green light: $55\% \leq RH\% \leq 65\%$ // Yellow light: $RH\% < 55\%$.

Manual Mode

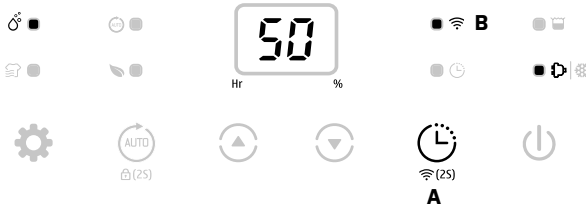


Press the mode button to select Manual mode, the unit runs by default continuous dehumidifying (B) with low fan speed.



At Manual mode all buttons are enabled to use.

WiFi Function [Timer button-2 seconds]



Press the Timer (A) button for 2s to activate WiFi function and enter the network mode, during the network configuration, the WiFi indicator flash quickly, after WiFi connected the indicator is on (B).



Detailed wifi operation, please refer to the manual "Smart Connection Operation Guide".

When the machine is in network mode, press the timer button for some seconds to disconnect the WiFi connection.

Safety Childlock Function [Fan Speed button-2 seconds]



Press the Auto button (A) for 2s to lock all buttons with a beeping sound, the same operation can unlock it.



Safety childlock function can be set at standby mode and working mode but can't be activated when water tank is full.

Low Temperature Defrost Indicator



When the ambient temperature is too low, the dehumidifier will enter into defrost mode (A), the unit runs with high fan speed without dehumidifying and the work indicator starts flashing.

Auto Shut off with Water Tank Full Indicator



The unit will enter into standby mode when the water tank is full (A) or when the water tank is not installed properly. After emptying the tank, or installing the water tank properly, the unit will go on to the previous mode.



Except for the power button, all other buttons are invalid.

Memory Function:

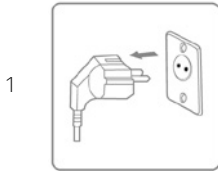
- When unplugged directly or power is cut, then reconnect to the power supply, the dehumidifier will run with the mode prior to the shutdown. The timer setting will be kept.
- Press the power button to switch off the dehumidifier, and then press the power button to switch it back on. The dehumidifier will run with the mode prior to the shutdown. The timer setting will be cancelled.
- Switch off the dehumidifier and unplug the power cord, then reconnect the power supply and switch on the dehumidifier. It will run in factory preset mode.

6. Cleaning

IMPORTANT!

The HEPA filter needs to be replaced once a year. This guarantees sufficient dehumidifying and air purifying efficiency.

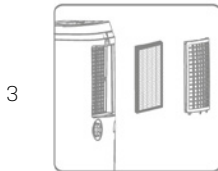
When the appliance is used regularly, the filter grill can become clogged with dust and particles. Therefore, the filter grill should be cleaned at least every two weeks. Follow these steps:



Turn off the unit and unplug it before cleaning.



Clean the cabinet with a soft, dry cloth. If the unit is very dirty, use a mild detergent. Wipe the dehumidifier with a slightly damp cloth. Never spray water on the unit.



Remove the filter grill (B) and clean with a vacuum cleaner or soapy water no hotter than 40°C. The HEPA (A) cannot be cleaned and needs to be replaced once a year.



Rinse and dry the filter grill completely before installing back to the device.

7. Storage

If the unit will not be used for an extended period, do the following:

1. Unplug the unit.
2. Clean the air filter with a vacuum cleaner.
3. Make sure the device is in perfect condition so that it is safe to use again after a long storage period.
4. Store the unit in appropriate packaging.
5. Store the unit in a dust-free place and out of direct sunlight. It is recommended to cover it with a piece of plastic.

8. Display Error Codes

Please contact your local distributor if any of the error codes below appears.

No.	Display code	Error	Display	Observation
1	E1	Temperature sensor error	Flashes every 30 seconds	Dehumidifier works normally.
2	E2	Humidity sensor error	Flashes every 30 seconds	Dehumidifier works normally, but can't set the humidity.
3	L3	Air inlet temperature is too high $\geq 42^{\circ}\text{C}$	Slow flash L3	Compressor stops working, fan works at low fan speed. If the dehumidifier temperature decreases below 40°C , the dehumidifier will start working normally.
5	L4	Air inlet temperature is too low $\leq 0^{\circ}\text{C}$	Slow flash L4	Compressor stops working, fan works at low fan speed. If the dehumidifier temperature increases above 2°C , the dehumidifier will start working normally.

9. Troubleshooting

Before contacting technical Support, check the following.

PROBLEM	POSSIBLE CAUSE	SOLUTION
The device does not work	The power is not connected	Insert the plug into the wall outlet
	The water tank is full	Empty the tank
	The tank has not been replaced correctly	Replace the tank
Water removal capacity is too low	Runtime is too short	Be patient and wait
	Ambient temperature or humidity is too low	It is normal that the device does not dehumidify in these conditions
The device works, but reduces the relative humidity insufficiently	The room is too big	We recommend using a dehumidifier with a greater capacity
	There is too much ventilation	Reduce ventilation (e.g. close windows and shut doors)
	The air filter is clogged	Clean the air filter grill or change the HEPA filter
	Set humidity is higher than the ambient humidity	Set the humidity lower than ambient humidity
Dehumidifier is blowing out warm air	The dried air is passed over heating coils before it is blown into the room as part of the dehumidifying process	This is normal, a dehumidifier is not an air cooler
The display is not showing the humidity set point	The display shows the room relative humidity not the set point	Press the humidity control button once to see the target relative humidity
Water on floor	There is residual water in tank, and the device is lurched too much by moving	Be careful when moving the tank
The dehumidifier is noisy	The air filter is blocked or the device is on an uneven surface	Clean the filter or put the device on a flat surface

IMPORTANT!

Please do not try to repair the dehumidifier by yourself to avoid any risk.

10. Technical specifications

Model Carl, Item No.	2506
Max working area, m ²	120
Recommended working area, m ²	2-85
WiFi	Yes
Filter	HEPA
Timer h	1 - 24
Operating air temperature, °C	5 ~ 35
Dehumidification capacity, l/day (Air 30°C, RH 80%)	25
Dehumidification capacity, l/day (Air 27°C, RH 60%)	15
Power consumption (Air 35°C, RH 80%)	400
Power consumption (Air 27°C, RH 60%)	280
Rated power, kW (Air 30°C, RH 80%)	0.11 ~ 0.73
Rated current, A (Air 35°C, RH 80%)	1.80
Rated current, A (Air 27°C, RH 60%)	1.30
Power supply V, Hz	220V-240/50
Sound level, dB (A)	46
Air flow, m ³ /h	180
Tank volume, L	6.5
Refrigerant. kg	0.08
Refrigerant	R290
Compressor	Rotary
Dimension, (WxDXH) mm	360 x 285 x 564
Drain Hose Diameter, mm	19
Drain hose included	Yes
Length of cable, cm	180
Net weight	14.5

The above technical data is for reference only. We reserve the right to change them without notice.

11. Smart Connection Operation Guide

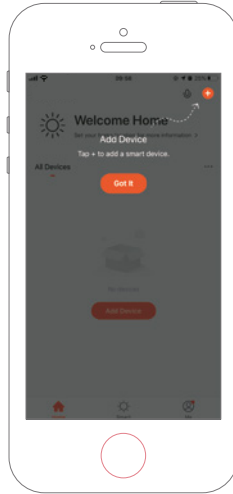
APP Binding Device

Search an APP platform for "TuyaSmart" or scan the following QR code to download the APP.



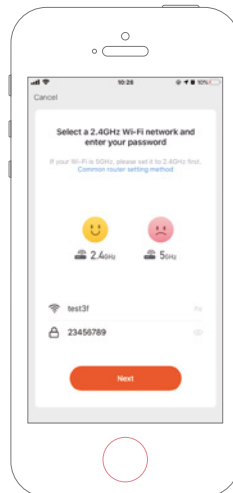
Step One

Make sure the phone is connected to the WIFI at home, and turn on the Bluetooth device, tap the upper right corner of the home page + to add device.



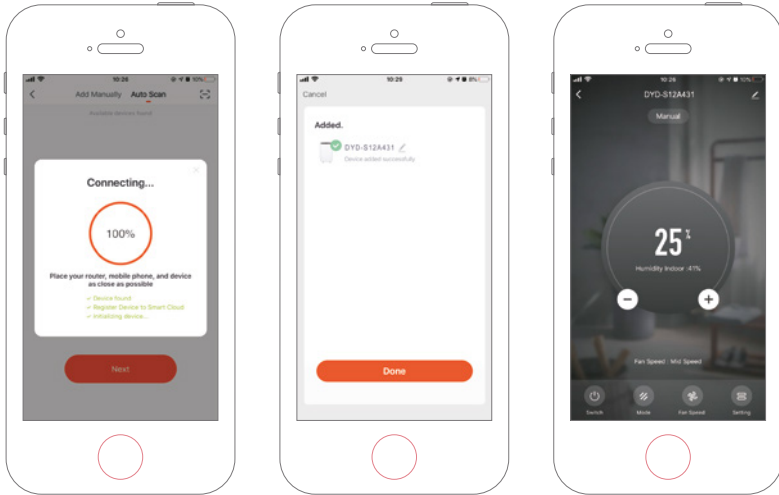
Step Two

Follow the guide to select the device to be configured, then enter the WiFi password.



Step Three

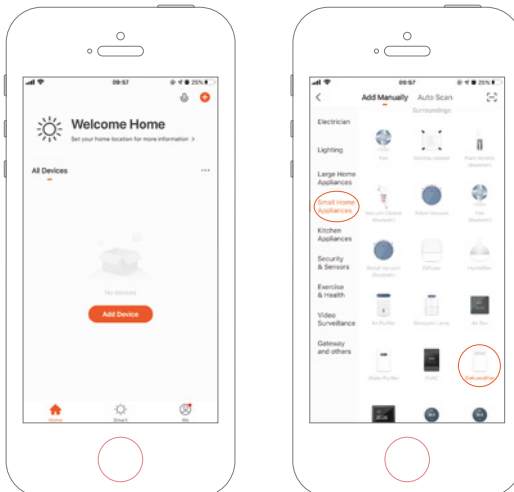
Complete the connection to set the dehumidifier with APP.



Adding Device Manually

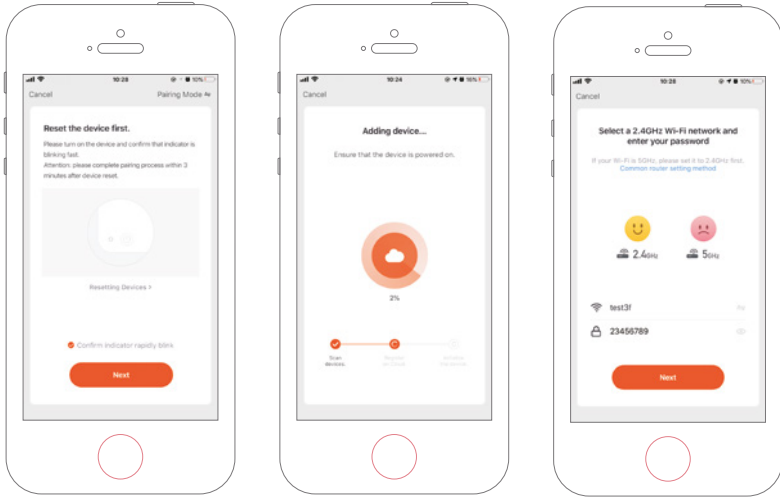
Step One

Tap Add Device on the home page or + in the upper right corner to go to the Add Device page.



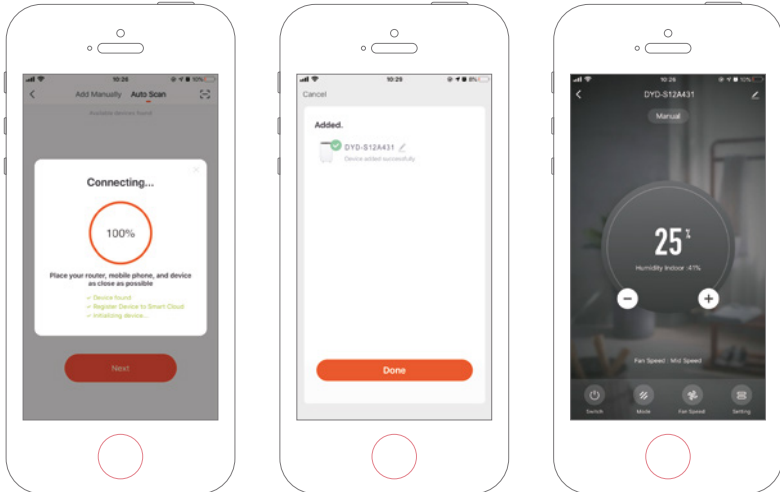
Step Two

Confirm the indicator rapidly blink and enter the WiFi password.



Step Three

Complete the connection to set the dehumidifier with APP.



12. Service

If you have any questions or need more information, please feel free to call

Customer service on +45 6916 3200

If you need service or to make a warranty claim, you must create a case directly in our support system. Go to the home page under SUPPORT.

13. Warranty

Limited warranty

We guarantee that all parts are free of defects in materials and workmanship for a period of two years from the date of purchase. The compressor has 6 years of guarantee from the date of purchase. The warranty covers only material or manufacturing defects that prevent the product from being able to be installed or operated in a normal way. Defective parts will be replaced or repaired.

The warranty does not cover transportation damage, any use other than what is intended, damage caused by incorrect assembly or improper use, damage caused by impact or other error, damage caused by frost cracking or by improper storage.

The warranty becomes void if the user modifies the product.

The warranty does not include product-related damage, property damage or general operational loss.

The manufacturer's liability cannot exceed the repair or replacement of defective parts and does not include labour costs to remove and reinstall the defective part, transportation costs to and from the service centre, and all other materials necessary to carry out the repair.

This warranty does not cover failure or malfunction as a result of the following:

- If the unit is not installed, operated or maintained in accordance with the instruction manual supplied with the unit .
- The workmanship of any installation of the unit.
- Misuse, alteration, accident, fire, flood, lightning strike, rodents, insects, negligence or unforeseen events.
- Use of non-factory authorised parts or accessories in conjunction with the product.

Limitation of liability

This is the only warranty provided by the manufacturer. No one is authorised to make any other warranties on our behalf.

This warranty is in lieu of all other warranties, expressed or implied, including but not limited to any implied warranty of fitness for a particular purpose and saleability. We expressly disclaim any liability for consequential, incidental, indirect, or consequential damages resulting from any breach of the express or implied warranties.

This warranty gives you specific legal rights, which may vary by country.

Complaints

In the event of any warranty claim a valid purchase receipt must be presented. Read about making warranty claims in the SERVICE section.



Thank you for choosing this product.
Please read this instruction manual before using it.